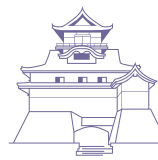


A Comprehensive Approach

Independent Ageing

Innovative Solutions & Technologies for the Ageing Population



Convention
October 13-15, 2023
Aichi, Japan



TABLE OF CONTENTS

WELCOME ADDRESS.....	3
PROGRAM COMMITTEE.....	4
VENUE MAP	5
GENERAL INFORMATION.....	6
PROGRAM	9
FRIDAY, 13 OCTOBER 2023	10
SATURDAY, 14 OCTOBER 2023.....	14
SUNDAY, 15 OCTOBER 2023.....	18
INFORMATION FOR SPEAKERS.....	20
RECOGNITION, ACKNOWLEDGEMENTS & INDUSTRY SUPPORT.....	21
RECOGNITION, ACKNOWLEDGEMENTS & INDUSTRY SUPPORT	22
EXHIBITION MAP.....	24
EXHIBITOR LIST.....	25
SPONSOR & EXHIBITOR PROFILES.....	28
GETTING AROUND IN NAGOYA & TOKONAME	49

WELCOME ADDRESS

Dear Esteemed Participants,

Welcome to the Inaugural Independent Ageing Convention in Aichi, Japan, from October 13th to 15th, 2023, with the gracious support of Aichi Prefecture.

As we gather here, we acknowledge the global shift in demographics, marked by a steady increase in life expectancy and population ageing. This transformation calls for a new societal paradigm, one that empowers ageing individuals to enjoy their rights and embrace innovative systems for a vibrant and independent life.

The INAGE Convention is your platform for groundbreaking solutions, policies, and cutting-edge technologies to enhance our lives as we grow older. Our program delves into the intricate relationship between ageing and vital aspects of our society, including the economy, healthcare, technologies and more. We will engage in essential discussions on policies to address the evolving needs of our ageing population.

Together, let's pave the way to a better, healthier, and more independent future for all!

Enjoy the INAGE 2023 experience!

Warm regards,

The Program Committee:

Prof. Hidenori Arai, President, National Center for Geriatrics and Gerontology, Japan
 Prof. Uzi Beller, Assuta-Ashdod Medical Center, Ben Gurion University of the Negev, Israel

Silvia Perel-Levin, Past Chair of the NGO Committee on Ageing in Geneva;
 Representative to the UN of the International Network for the Prevention of Elder Abuse (INPEA) and the International Longevity Centre Global Alliance (ILC GA), Switzerland/Israel

Prof. Israel Doron, Director, Department of Gerontology, University of Haifa, Israel



PROGRAM COMMITTEE



Prof. Hidenori Arai

President of INAGE,
President of the National
Center for Geriatrics and
Gerontology, Japan



Silvia Perel-Levin

Chair of the INAGE Program
Committee, Representative
to the UN of the International
Longevity Centre Global
Alliance, Switzerland/Israel



Dr. Hitoshi Kagaya

Secretary of the INAGE
Program Committee;
Professor at Fujita Health
University, Japan



Dr. Izumi Kondo

Hospital director at the
National Center for Geriatrics
and Gerontology, Japan



Prof. Uzi Beller

Assuta-Ashdod Medical
Center, Ben Gurion University
of the Negev, Israel



Prof. Israel Doron

Director of the Department
of Gerontology at the
University of Haifa, Israel



Idit Reisner

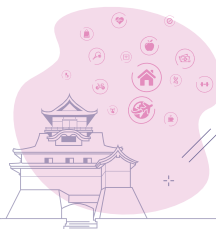
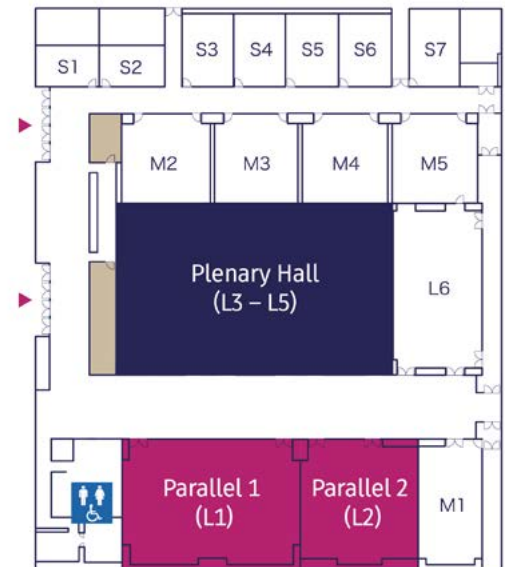
Director, Client Accounts,
Original Events, Kenes
Group, Israel

VENUE MAP

会議室 Conference Area



Exhibition & Networking Area



GENERAL INFORMATION

VENUE

AICHI SKY EXPO

5-10-1, Centrair, Tokoname City
Aichi, Japan 479-0881

REGISTRATION DESK HOURS

Friday, 13 October	07:30 - 19:30
Saturday, 14 October	08:00 - 18:00
Sunday, 15 October	08:00 - 13:00

EXHIBITION OPENING TIMES

Friday, 13 October	09:00 - 19:30
Saturday, 14 October	09:00 - 18:00
Sunday, 15 October	09:00 - 13:00

PARTICIPANTS BADGE

You will receive your name badge at the Registration desk onsite and are kindly requested to wear your badge during all sessions and events.

WI FI

Free WIFI will be available at the Conference. Please be aware that public WIFI capacity is always limited and therefore limited to email and web browsing activity.
Network: INAGE2023 / Password: inage2023

REFRESHMENTS AND WELCOME RECEPTION

Refreshments will be served during the coffee breaks and the Welcome Reception (on 13th October at 18:15) in the Exhibition & Networking Area (Hall A) at the times indicated in the program.



TRANSLATION

All sessions and lectures will be conducted in both English and Japanese, with simultaneous interpretation available. However, the Public Open Seminars will exclusively be conducted in Japanese.

GUEST ATTENDANCE POLICY

All event activities (including meal functions, exhibition, etc.) are exclusively reserved for registered attendees. Non-registered guests (including children, family members, colleagues, etc.) are not allowed in any of the event areas. Badges provided at registration are required for entrance into all functions and will be strictly enforced.

PHOTOGRAPHY AND RECORDING PRIVILEGES

No photographs, video recording or audio recording is permitted in scientific sessions.

MOBILE PHONES

Mobile phones must be muted during all sessions.

LIABILITY AND INSURANCE

The Conference Secretariat and Organizers cannot accept liability for personal accidents or loss of or damage to private property of participants. Participants are advised not to leave their personal belongings unattended in session halls and throughout the Venue hotel.

CONFERENCE SECRETARIAT

independent-ageing.kenes.com

Rue François- Versonnex 7, 1207 Geneva, Switzerland.

www.kenes.com



Join Us on Social Media

Stay up to date, connect with your colleagues and share your experience by using the official meeting hashtag:

#INAGE2023



PROGRAM

A Comprehensive Approach

Independent Ageing

Innovative Solutions & Technologies for the Ageing Population



FRIDAY, 13 OCTOBER 2023

Plenary Hall (L3 - L5)

09:00 - 10:15 **OPENING REMARKS & PLENARY 1: DEMOGRAPHICS OF AGEING - OPPORTUNITIES AND CHALLENGES**

09:00 - 09:15 Opening Words from **INAGE Program Committee**

Moderator: Julie Byles, ILC GA & NSW University Australia

09:15 - 09:35 **Global ageing: now and the future**

John Beard, Columbia University, USA

09:35 - 09:50 **People can grow even after the age of 80**

Masako Wakamiya, IT Evangelist, Founder of ExcelArt, Japan

09:50 - 10:15 Panel discussion & Q&A

Panelists:

Masako Wakamiya, IT Evangelist, Founder of ExcelArt, Japan

John Beard, Columbia University, USA

Hidegori Arai, National Center for Geriatrics and Gerontology, Japan

10:15 - 10:30 Welcome address by the Governor of Aichi and Welcome words by officials from the Ministry of Health, Labor, and Welfare

Exhibition & Networking Hall (A)

10:30 - 11:00 **COFFEE BREAK & EXHIBITION**

Plenary Hall (L3 - L5)

Parallel Hall 1 (L1)

Parallel Hall 2 (L2)

11:00 - 12:30 **TRACK: AGEING AND THE ECONOMY - BENEFITS TO SOCIETY**

Moderator: Silvia Perel-Levin, International Longevity Centre Global Alliance., Switzerland

TRACK: AGEING AND TECHNOLOGIES

Moderator: Cynthia Bullock, Healthy Ageing, UKRI - Innovate UK, UK

TRACK: AGEING AND HEALTH
Moderator: Margaret Gillis, ILC GA and president ILC Canada

11:00 - 11:15 **Why do we need an ageing workforce and how do we get there?**

Dorotea Schmidt, International Labour Organization, Switzerland

Ageing in a digital world

Roxana Widmer-Iliescu, International Telecommunication Union, Switzerland

Needing and receiving health and social care

Julie Byles, ILC GA & NSW University Australia

11:15 - 11:30 **Artificial Intelligence for job search and placement**

Uzi Beller, Assuta-Ashdod Medical Center, Ben Gurion University of the Negev, Israel

Empowering Generations Through Intergenerational Digital Literacy Training

Xue Bai, The Hong Kong Polytechnic University, Hong Kong

Long-Term Care for older persons in the Youngest Region (Africa): generational perspectives for autonomy

Jaco Hoffman, North-West University Vanderbijlpark, South Africa

11:30 - 11:45 **Relationship between cognitive function and economic behavior**

Kohei Komamura, Keio University, Japan

Differences of internet use within older people in Belgium

Nico de Witte, Vrije Universiteit Brussel/ University College Ghent, Belgium

The protective role of the cognitive reserve: from research to intervention

Barbara Colombo, Champlain College, USA

11:45 - 12:00 **Older consumers in the UK and Japan - Opportunities for economic growth**

David Sinclair, International Longevity Centre UK, UK

i-Cane Robots for assisting and supporting walking of the aged

Toshio Fukuda, Robotics Nagoya University, Japan

Postgraduate Training of Healthcare Professionals for Independent Ageing

Meltem Koca, Ankara Diskapi Yildirim Beyazit Training and Research Hospital, Turkey

12:00 - 12:30 Panel discussion and Q&A

Panel discussion and Q&A

Panel discussion and Q&A

12:30 - 12:45 **SHORT BREAK**

Plenary Hall (L3 - L5)

Parallel Hall 1 (L1)

Parallel Hall 2 (L2)

12:45 - 13:30 **Session supported by Dai-ichi Life Holding**

"Dementia Prevention" Explanation and latest information on dementia and the effect of preventing cognitive function decline by approaches like exercises

Hiroyuki Shimada, Director, Center for Gerontology and Social Science, National Center for Geriatrics and Gerontology, Japan

12:45 - 13:45

Public Open Seminar 1

Novel outpatient clinic for the healthy aging based on the concept of the Locomotive Syndrome and Frailty

Moderator: Hitoshi Kagaya, NCGG, Japan

12:45 - 13:15

Lecture by Yasumoto Matsui, Director of Center for Frailty and Locomotive Syndrome, NCGG, Japan

13:15 - 13:45

Q&A and Exercise

12:45 - 13:15

Session supported by Lux Research

Innovating for a Superageing Planet

12:45 - 13:05

Presentation by **Nardev Ramanathan**, Lux Research, Singapore

13:05 - 13:15

Q&A

Exhibition & Networking Hall (A)

13:30 - 14:30 **LUNCH BREAK & EXHIBITION**

Plenary Hall (L3 - L5)

Parallel Hall 1 (L1)

Parallel Hall 2 (L2)

14:30 - 16:00 **TRACK: AGE-FRIENDLY ENVIRONMENTS & CULTURE**

Moderator: Silvia Perel-Levin, International Longevity Centre Global Alliance., Switzerland

PUBLIC OPEN SEMINAR

Public Open seminars 2

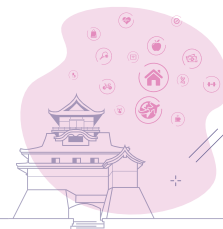
14:30 - 15:15

Technology implementation for a vibrant society

Moderator: Atsushi Tsukahara, NCGG, Japan

TRACK: AGEING AND HEALTH CONFRONTING PANDEMICS AND COMBATting AGEISM

Moderator: Jaco Hoffman, North-West University, South Africa



- 14:30 - 14:45 **WHO Global Network for Age-friendly Cities and Communities**
Thiago Héríc de Sá, Age-friendly Environments, WHO, Switzerland
- 14:45 - 15:00 **Age-friendly Akita - a Japanese example**
Tomino Masaharu, Akita City, Japan
- 15:00 - 15:15 **Creating Positive Ageing Experiences Through Inclusive Design**
Chris McGinley, Royal College of Art, Helen Hamlyn Centre for Design, Age and Ability Lab, UK
- 15:15 - 15:30 **Improvisation and Creative Ageing**
Ruth Yamamoto, Prince George's Community College, USA
- 15:30 - 16:00 Panel discussion and Q&A
- 14:30 - 14:55 **Lecture by Atsushi Tsukahara**, Associate Professor, Development of Robotics and Artificial Intelligence Laboratory, Assistive Robot Center, NCGG, Japan
- 14:45 - 15:00 **Independent ageing, dying and bereavement during COVID**
Carl Becker, Kyoto University School of Medicine, Japan
- 15:00 - 15:15 **Social capital of ageing South Asians in Hong Kong in the context of COVID-19**
Daniel Lai, Hong Kong Baptist University, Hong Kong
- 15:15 - 15:27 **A human rights-based approach to future pandemics**
Margaret Gillis, ILC GA and president ILC Canada
- 15:27 - 15:39 **Lecture by Aiko Osawa**, Chief Physician, Department of Rehabilitation Medicine, NCGG, Japan
- 15:39 - 16:00 Home Exercise Program for Older People (HEPOP)

Exhibition & Networking Hall (A)

16:00 - 16:30 **COFFEE BREAK & EXHIBITION**

Plenary Hall (L3 - L5)

- 16:30 - 17:15 **PLENARY SESSION 2: AGE-FRIENDLY POLICIES AT NATIONAL AND LOCAL LEVELS - HUMAN RIGHTS**
Moderator: Silvia Perel-Levin, International Longevity Centre Global Alliance., Switzerland
- 16:30 - 16:45 **Towards a human rights-based approach to independent ageing**
Claudia Mahler, Independent Expert on the enjoyment of all human rights by older persons, UN, Austria
- 16:45 - 17:00 **The Human Right to Leisure in Old Age**
Israel Doron, University of Haifa, Israel

Independent Ageing



17:00 - 17:15 Panel discussion and Q&A

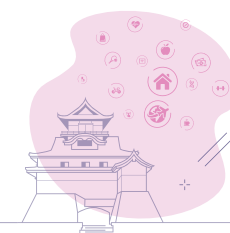
17:15 - 17:30 **SHORT BREAK**

- | | | | |
|---------------|----------------------------------------------------------------------------------------------------------------------------------------------------------------------------------------------------------------------------------------------------------------------------------------------------------------------------------------------------------------------------------------------------|-----------------------------------------------------------------------------------------------------------------------------------------------------------------------------------------------------------------------------------------------------------------|-------------------------------------------------------------------------------------------------------------------------------------------------------------------------------------------------------------------------------------------------------------------------------------------------------------------------------------------------------------------------------------------------------------------------------------------------|
| | Plenary Hall (L3 - L5) | Parallel Hall 1 (L1) | Parallel Hall 2 (L2) |
| 17:30 - 18:15 | Session supported by ILC - Japan
Promoting productive aging: new coproduction between businesses and municipalities
Ageing in Place
Ichiro Nakamura , International Longevity Center (ILC) Japan
The potential of collaboration with the business sector in supporting older adults' social activities
Hiroki Hasegawa , JTB Corp., Japan | Session by Microsoft Japan
17:30 - 18:05
How Advanced Technologies Contribute to a Better Aging Society
Kunihiro Ohyama , Business Executive Officer, Healthcare Industry Lead, Microsoft Japan Co., Ltd.
18:05 - 18:15
Q&A | Session by Magic Shields and Carter Group
17:30 - 17:45
Magic Shields-tbc
17:45 - 18:15
Session by The Carter Group (Living Best: Age-Tech is Now!)
Live Moderation: Linda Sherman , Founder of the Rethinking Aging Club, CMO for MBETHealth, Managing Editor, Boomer Tech Talk, USA
Video Panel featuring Global Age-Tech Experts: Global Perspectives on Nurturing Age-Tech Innovations |
| 18:15 | WELCOME RECEPTION | | |

Exhibition & Networking Hall (A)

18:15 **WELCOME RECEPTION**

#INAGE2023



SATURDAY, 14 OCTOBER 2023

Plenary Hall (L3 - L5)

09:00 - 10:30 **PLENARY 3: TECHNOLOGIES IN AN AGEING WORLD**

Moderator: Silvia Perel-Levin, International Longevity Centre Global Alliance., Switzerland

09:00 - 09:30 **Developing AgeTech that Makes Sense**

Alex Mihailidis, University of Toronto, Canada

09:30 - 10:00 **Making Technology Available**

Kylie Shae, Team Lead, Access to Assistive Technology (ATA), World Health Organization, Switzerland

10:00 - 10:30 Panel discussion and Q&A

Exhibition & Networking Hall (A)

10:30 - 11:00 **COFFEE BREAK & EXHIBITION**

Plenary Hall (L3 - L5)

Parallel Hall 1 (L1)

Parallel Hall 2 (L2)

11:00 - 12:30 **TRACK: AGEING AND THE ECONOMY - BENEFITS TO SOCIETY**

Moderator: David Sinclair, International Longevity Centre, United Kingdom

TRACK: AGEING AND TECHNOLOGIES

Moderator: Hidenori Arai, NCGG, Japan

TRACK: AGEING AND HEALTH

Moderator: Masafumi Kuzuya, Meitetsu Hospital and Nagoya University

11:00 - 11:20 **The Continuing Contribution of Older Adults' Human Capital to the Economy and Community**

Ryan Yeung, Happy-Retired, Hong Kong

11:00 - 11:15 **Companion Robots For Alleviating Loneliness**

Dor Skuler, Intuition Robotics, Israel

11:00 - 11:15 **Leveraging innovation to tackle inequalities in healthy ageing**

Cynthia Bullock, UKRI, UK

11:20 - 11:40 **Financial literacy as a mechanism to ensure continuing contribution to the economy**

Susana Harding, International Longevity Centre, Singapore
Tsao Foundation, Singapore

11:15 - 11:30 **Robotic smart home in an aging society**

Yohei Otaka, Fujita Medical University, Japan

11:30 - 11:45 **Promoting Healthy Longevity with AI-Powered Technologies: iHARP**

Pei-Wen Hsu, ASUSTeK COMPUTER INC, Taiwan

11:15 - 11:30 **The effects of exercise on cognitive and physical function in community-dwelling older persons**

Hiroyuki Umegaki, Nagoya University Graduate School of Medicine, Japan

11:30 - 11:45 **Digital healthcare to prevent dementia in the older adults**

Hiroyuki Shimada, National Center for Geriatrics and Gerontology, Japan

11:40 - 12:00 **Understanding changing intergenerational relationships in context: a Scottish regional case study**

Judith Phillips, Stirling University/ UKRI Healthy Ageing Challenge, UK

11:45 - 12:00 **Anomaly Detection in Support of Independent Living**

Ahmad Lotfi, Nottingham Trent University, UK

11:45 - 12:00 **Gender differences in digital healthcare and multi-morbidity with migration status among older adults in India**

Prem Shankar Mishra, Indian Institute of Management Bangalore, India

12:00 - 12:30 Panel discussion and Q&A

12:00 - 12:30

Panel discussion and Q&A

12:00 - 12:30

Panel discussion and Q&A

12:30 - 12:45 **SHORT BREAK**

Plenary Hall (L3 - L5)

Parallel Hall 1 (L1)

Parallel Hall 2 (L2)

12:45 - 13:30 **Session supported by UK Research and Innovation - UKRI**

Care and Housing

12:40 - 13:55 **Workshop organized by the World Health Organization**

12:45 - 13:40 **Public Open Seminar 4**

12:45 - 13:00 **Overview of the UK Landscape on housing and care, the drive for a new housing task force and the role of research and innovation**

Judith Phillips, Stirling University/ UKRI Healthy Ageing Challenge, UK

Improving access to assistive technology in partnership with age-friendly cities and communities

Moderators:

Thiago Hérick de Sá, Age-friendly Environments, World Health Organization, Switzerland

Kylie Shae, Team Lead, Access to Assistive Technology (ATA), World Health Organization, Switzerland

Dysphagia, incontinence, and pelvic floor muscle exercises

Moderator: Hitoshi Kagaya, NCGG, Japan

13:00 - 13:10 **Showcase relevant Housing and Care research and innovation projects from the UK Research and Innovation Health Ageing Challenge Portfolio**

Cynthia Bullock, Healthy Ageing, UKRI - Innovate UK, UK

12:40 - 12:50 **Presentation on dementia by Keizo Sakurai**

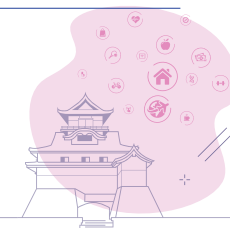
12:50 - 13:00

Presentation on digital health project by Kensuke Doi, Bureau of Economy and Industry, Aichi Prefectural Government

Lecture by Hitoshi Kagaya, Director of Center for Swallowing and Continence, NCGG, Japan

13:00 - 13:10

Lecture by Toshihiro Matsuura, Deputy Director of Hospital, NCGG, Japan



13:10 - 13:25	Case study highlighting innovation as an output from academic research drawing on Designing homes for healthy cognitive ageing (DESCHa), Nurolight, and Housing for ageing for 2040+ Lesley Palmer , Development Centre at Stirling, UK	13:00 - 13:15 Presentation on assistive technology by Kylie Shae , Team Lead, Access to Assistive Technology (ATA), World Health Organization, Switzerland 13:15 - 13:30 Presentation on age-friendly environments and the Global Network by Thiago Hérick de Sá , Age-friendly Environments, World Health Organization, Switzerland	13:10 - 13:20 Lecture by Masanori Nomiya and Hisae Nishii , Department of Geriatric Lower Urinary Tract Function, Center for Swallowing and Continence, NCGG, Japan
13:25 - 13:30	Q&A	13:30 - 13:55 Open discussion and Q&A	13:20 - 13:40 Pelvic floor muscle exercises
Exhibition & Networking Hall (A)			
13:30 - 14:30	LUNCH BREAK & EXHIBITION		
	Plenary Hall (L3 - L5)	Parallel Hall 1 (L1)	Parallel Hall 2 (L2)
14:30 - 16:00	TRACK: AGE-FRIENDLY ENVIRONMENTS & CULTURE Moderator: Chris McGinley , Helen Hamlyn Centre for Design, Royal College of Art, United Kingdom	TRACK: AGEING AND TECHNOLOGIES Moderator: Tina Woods , UK National Innovation Center for Ageing, United Kingdom	TRACK: AGEING AND HEALTH Moderator: Silvia Perel-Levin , International Longevity Centre Global Alliance, Switzerland
14:30 - 14:45	Urban policies' impact on health and wellbeing of older persons - Shaping urban futures Carlos Dora , International Society for Urban Health (ISUH), Switzerland	Advanced Driving Assistance Technologies for Older Drivers Hirofumi Aoki , Nagoya University, Japan	14:30 - 14:50 Community Redesign" toward healthy ageing society -Frailty prevention and community care system Iijima Katsuya , Institute of Gerontology, Institute for Future Initiatives, The University of Tokyo, Japan
14:45 - 15:00	A post-pandemic age-friendly megacity? Navigating Tokyo's urban challenges Mike Annear , Waseda University, Japan	Accelerating Systems Change for Healthy Longevity Stephen Johnston , SOMPO Digital Lab & Fordcastle, Australia	14:50 - 15:10 Increased midlife obesity and mobility dysfunction in late-life- Rajkumar Dorajoo , Genome Institute of Singapore, Singapore
15:00 - 15:15	Design Strategy of Friendly and Healthy Environment for Urban Aging Community Xiaoyi Hu , Wuhan University of Science And Technology, China	A design approach to gerontechnology - Start-up experience from Taiwan Yeh-Liang Hsu , Gerontechnology Research Center, Yuan Ze University, Taiwan	15:10 - 15:30 Visualization of invisible aging on human motor neurons and its applications Kohei Watanabe , Chukyo University, Japan
15:15 - 15:30	The Belgian Ageing Studies, a cocreative project including older people as researchers Nico De Witte , Vrije Universiteit Brussel/ University College Ghent, Belgium	The future of digital medicine and aging David Wortley , International Society of Digital Medicine (ISDM) UK	

15:30 - 16:00	Panel discussion and Q&A	Panel discussion and Q&A	15:30 - 16:00 Panel discussion and Q&A
Exhibition & Networking Hall (A)			
16:00 - 16:30	COFFEE BREAK & EXHIBITION		
Plenary Hall (L3 - L5)			
16:30 - 17:30	PLENARY 4: AGEING AND THE GLOBAL ECONOMY: BENEFITS TO SOCIETY Moderator: Hidenori Arai , NCGG, Japan		
16:30 - 16:50	Lecture by Taisuke Hashimoto , Japan Ministry of Economy, Japan		
16:50 - 17:10	The Global Longevity economy report, Justin Ladner , AARP, USA		
17:10 - 17:30	Panel discussion and Q&A		
	Plenary Hall (L3 - L5)	Parallel Hall 1 (L1)	
17:30 - 18:00	17:30 - 17:45 Session supported by SENS Research Foundation A Damage-Repair Approach to the Age-Related Disease Epidemic Lisa Fabiny-Kiser , CEO of SENS Research Foundation, USA	17:30 - 18:00 Session by The Carter Group (Living Best: Age-Tech is Now!) Age-Tech Innovations in Action Carol Chiang , OT and Smart Home Solutions Expert, and Founder, Evolving Homes, USA	



SUNDAY, 15 OCTOBER 2023

Plenary Hall (L3 - L5)

09:00 - 10:30 **PLENARY 5: TOWARD A PERSON-CENTRED HEALTHCARE**

Moderator: Silvia Perel-Levin, International Longevity Centre Global Alliance., Switzerland

09:00 - 09:20 **Developing Communities of Care**

Sarah Harper, University of Oxford, UK

09:20 - 09:40 **Primordial prevention toward healthy ageing**

Katsunori Kondo, Chiba University, Japan

09:40 - 10:30 Panel discussion and Q&A

Panelists:

John Beard, ILC USA; Columbia University, USA

Sarah Harper, University of Oxford, UK

Katsunori Kond, Chiba University, Japan

Exhibition & Networking Hall (A)

10:30 - 11:00 **COFFEE BREAK & EXHIBITION**

Plenary Hall (L3 - L5)

Parallel Hall 1 (L1)

Parallel Hall 2 (L2)

11:00 - 12:30 **TRACK: AGE- FRIENDLY ENVIRONMENTS & CULTURE**

Moderator: Carlos Dora, International Society for Urban Health (ISUH), Switzerland

TRACK: AGEING AND TECHNOLOGIES

Moderator: Hidenori Arai, NCGG, Japan

TRACK: AGEING AND HEALTH

Moderator: Margaret Gillis, ILC GA and president ILC Canada

11:00 - 11:25 **Sustainable and supportive housing to meet the aspirations and needs of ageing populations**

Mary Njoki, University of Stirling, UK

11:00 - 11:15

The use of technology to promote independent gait and stability

Izumi Kondo, NCGG, Japan

11:00 - 11:15

Resilience of ageing communities

Susana Harding, International Longevity Centre, Singapore
Tsao Foundation, Singapore

11:25 - 11:50

iGESS (Inter-Generational Engagement in Secondary Schools)

Daniel Lai, Hong Kong Baptist University, Hong Kong

Alice Wong, Hong Kong Baptist University, Hong Kong

11:15 - 11:30

Early detection of dementia using AI-based eye-tracking technology

Shuko Takeda, Osaka University, Japan

11:30 - 11:45

Healthy longevity for all: Harnessing science, technology, investment and policy for global sustainable impact

Tina Woods, Collider Health, UK

11:45 - 12:00

Driving impact at scale for our ageing population

Eric Kihlstrom, Centaur Robotics, UK

11:15 - 11:30

Innovation in Dementia Prevention and Care

Takashi Sakurai, NCGG, Japan

11:30 - 11:45

A lifestyle intervention for social vulnerable older adults in community centers

Julie Vanderlinden, Odisee University of Applied Sciences, Belgium

11:45 - 12:00

Association between leg asymmetry and age among Icelandic Older adults

Milan Chang, Reykjavik University, Iceland

11:50 - 12:30

Panel discussion and Q&A

12:00 - 12:30

Panel discussion and Q&A

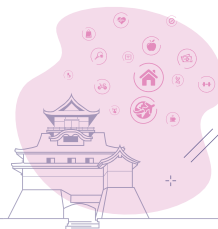
12:00 - 12:30

Panel discussion and Q&A

Plenary Hall (L3 - L5)

12:30 - 12:45

CLOSING ADDRESS



INFORMATION FOR SPEAKERS

Please [check the program](#) in case of last-minute scheduling changes.

SPEAKERS' READY DESKS

All speakers and oral presenters are requested to upload their presentations at the Speakers' Ready Desks at least 2 hours before the start of their session to check their slides with the technical staff.

Speakers can upload their presentations at any time from the beginning of the convention and do not need to wait until the day of the presentation. Speakers in morning sessions are strongly advised to pre-load their presentation the day before.

Location: Inside the Hall where Your talk is allocated to. One of the following:

- Plenary Hall (L3-L5)
- Parallel 1 (L1)
- Parallel 2 (L2)

Working Time

Friday, 13 October	07:30 - 18:00
Saturday, 14 October	08:00 - 18:00
Sunday, 15 October	08:00 - 13:00



RECOGNITION, ACKNOWLEDGEMENTS & INDUSTRY SUPPORT

A Comprehensive Approach

Independent Ageing

Innovative Solutions &
Technologies for the Ageing
Population



RECOGNITION, ACKNOWLEDGEMENTS & INDUSTRY SUPPORT

INAGE 2023 would like to thank and acknowledge the following for their generous support of the conference:

Silver Sponsor



General Sponsor

		 <i>Kowa Company, Ltd.</i>	

Exhibitor

		 <i>See what you're made of</i>	

Independent Ageing



Independent Ageing is Officially Endorsed By // 後援機関



Organizers



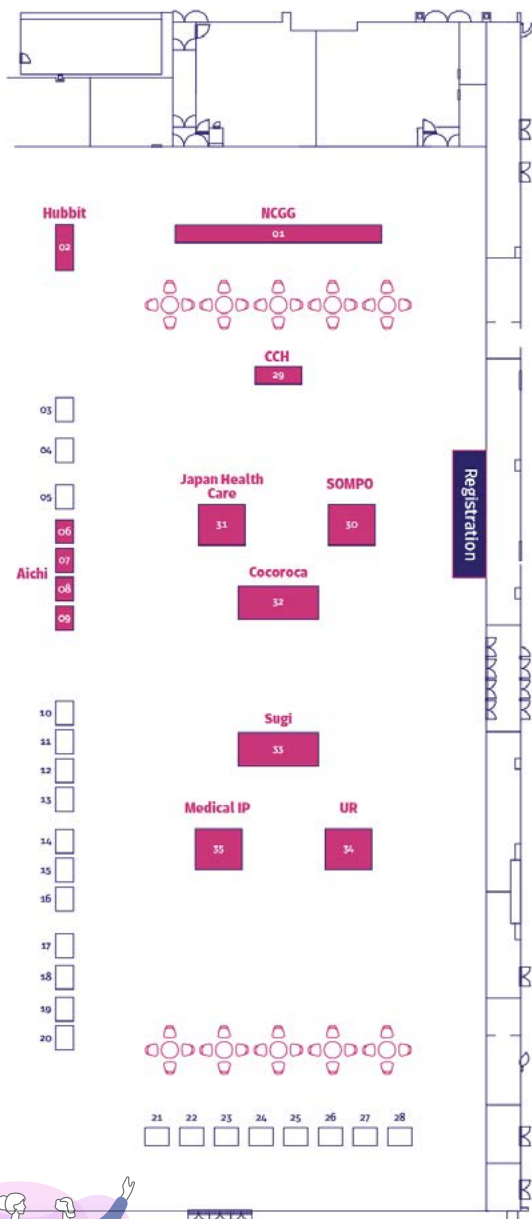
Endorsing Associations



#INAGE2023



EXHIBITION MAP



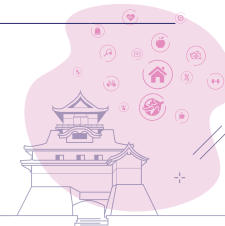
Independent Ageing



EXHIBITOR LIST

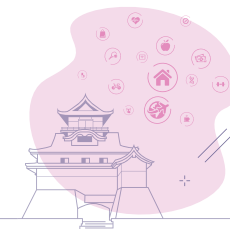
Logo	Exhibitor	Booth No
	National Center for Geriatrics and Gerontology	1
	Hubbit,inc	2
	Medical Device Industrial Development Council	3
	Chubu Electric Power Co., Inc.	4
	Knowledge Hub Aichi, Priority Research Project from Aichi Prefectural Government	5
	Aichi Prefecture [Aichi Digital Health Project]	6
	Toyota City	7
	Wellness Volley Promotion Council	8
	Tokoname City	9
	USC Leonard Davis School of Gerontology	10
	IFG Corporation	11

#INAGE2023



Logo	Exhibitor	Booth No
	SAKAI Medical Co.,Ltd.	12
	Abbott Japan LLC	13
	TANITA Corporation	14
	SS SAICHI Corporation	15
	Nihon Binary Co., Ltd.	16
	PARAMOUNT BED CO., LTD.	17
	Sysnet Inc.	18
	TL Genomics Inc.	19
	Good Life Design, Inc.	20
	Toppan Inc.	21
	InBody Japan Inc.	22
	MORITOH Co., Ltd.	23

Logo	Exhibitor	Booth No
	Inter Reha Co.,Ltd.	24
	TOWA PHARMACEUTICAL CO.,LTD.	25
	KISSEI COMTEC CO.,LTD.	26
	CYBERDYNE Inc.	27
	PARO Robots	28
	The College of Contemporary Health (CCH)	29
	Sompo Holdings, Inc.	30
	Japan Selfcare Institute®	31
	COCOROCA CORPORATION	32
	SUGI PHARMACY CO.,LTD.	33
	Urban Renaissance Agency	34
	MEDICAL IP	35



SPONSOR & EXHIBITOR PROFILES



Japan Selfcare Institute®

japan-selfcare-i.jp

2-9-13-3F, Azamino, Yokohamashiaobaku, Kanagawa, 225-0011 Japan

We look ahead to the 2025 problem and focus our efforts on health care, especially for the prevention of dementia.

街に、ルネッサンス



Urban Renaissance Agency

ur-net.go.jp/overseas

6-50-1 Yokohama i-land Tower, Honcho, Naka-ku, Yokohama-city, Kanagawa, Japan

Urban Renaissance Agency (UR) is a semi-governmental organization originally established in 1955 to address urban and housing agendas in Japan. Taking advantage of such position and our extensive experiences, we have worked closely with governmental and private sectors, implementing a wide variety of projects.

UR has led large-scale urban development and housing projects, and has also made significant contributions to institutional designs and technological growth. We continue to extend a major influence in the field of urban development in Japan, supporting designing and realizing “a city where people can shine” - which is our fundamental mission.

Independent Ageing



一般社団法人日本セルフケア研究会®

japan-selfcare-i.jp

〒225-0011 神奈川県横浜市青葉区あざみ野2-9-13-1F

弊社はヘルスケア特に認知症予防の啓蒙活動に力を入れております。主な活動として、音波機器ウルトラマの体験・レンタル・販売を承っております。その他として認知症予防外来があるヘテロクリニックの院長、木ノ本景子医師をお招きした認知症をテーマとするセミナーを開催、ヘルシーライフがテーマのフリーペーパー誌「あざみ野STYLE」の監修、2025年問題ドキュメンタリー映画のプロデューサーとして参画、横浜市にある健康がテーマのショールーム「Brain&Body Store R」とカフェバーとの併設を実現いたしました。

独立行政法人 都市再生機構

ur-net.go.jp

神奈川県横浜市中区本町6-50-1 横浜アイランドタワー

1955年に設立された日本住宅公団を母体とする私たちUR都市機構は、60年以上にわたり“まち”と“住まい”に関わるさまざまな課題に向き合ってきました。

そして現在は「人が輝く都市をめざして、美しく安全で快適なまちをプロデュース」することを使命に、人口減少・少子高齢化、頻発する大規模災害、環境問題など

重要な社会的課題にも積極的に向き合い、国の政策実施機関として

地方公共団体や民間事業者と連携しながら業務を推進しております。



Medical IP Co., Ltd.

<https://medicalip.com/>

Korea: 9F, 15 Jongro-33gil, Jongno-gu, Seoul, Korea Rep.

U.S.: 3003 N First St. San Jose, CA, U.S.

In a landmark move, Medical IP is setting new standards in healthcare with its FDA-approved AI solutions.

Merging Whole-Body Composition Analysis and Digital Twins, the company aims to enhance quality of life and longevity. Its Patient-Centric AI is designed for a healthier, longer lifespan. Medical IP has also made strides in flawless medical image analysis and is expanding its Digital Twin technology into the metaverse. Poised to revolutionize healthcare, Medical IP is not just adapting to the future but shaping it.



Sompo Holdings, Inc.

<https://www.sompo-hd.com/en/>

26-1, Nishi-Shinjuku 1-chome, Shinjuku-ku, Tokyo 160-8338, Japan

We will strive to contribute to the security, health, and wellbeing of our customers and society as a whole by providing insurance and related services of the highest quality possible.

The Sompo Group is working to transform its existing business models and the business portfolio of the entire Group through the use of digital technologies and the development of new businesses and services. SOMPO's Purpose is to create a society in which every person can live a healthy, prosperous and happy life in one's own way with “A Theme Park for Security, Health & Well”

Medical IP Co., Ltd.

<https://medicalip.com/>

〒150-0043

東京都渋谷区道玄坂1丁目10番8号渋谷道玄坂東急ビル2F-C

Medical IP - 未来の医療を、AIとデジタルツインで切り拓く

Medical IPは、医療にイノベーションを注入します。最先端のWhole-Body Composition Analysis (MFDS Approved・FDA(510K) Clearance)や、デジタルツインを使った医用画像解析技術を手がけています。人々の健康と幸せを第一に考えたAI技術で、より多くの人たちのより良いQuality of Lifeを保ち、そして幸せに長生きできるようにすること。これこそが、我々のミッションです。

「高精度な医用画像のセグメンテーション・解析」と「デジタルツインで医療メタバースの実用」が、Medical IPのブースに準備されています。

SOMPOホールディングス株式会社

<https://www.sompo-hd.com/>

〒160-8338 東京都新宿区西新宿1-26-1

SOMPOグループは、お客さまの視点ですべての価値判断を行い、保険を基盤としてさらに幅広い事業活動を通じ、お客さまの安心・安全・健康に資する最高品質のサービスをご提供し、社会に貢献します。

デジタル技術の活用や新たな事業・サービスの展開によって、既存のビジネスモデルやグループ全体の事業ポートフォリオの変革を進めています。“安心・安全・健康のテーマパーク”により、あらゆる人が自分らしい人生を健康で豊かに楽しむことのできる社会を実現することをパーパスとしています。

#INAGE2023





COCOROCA CORPORATION

<https://cocoroca.co.jp/>

Gotenyama Trust Tower 11F, 4-7-35 Kitashinagawa, Shinagawa-ku, Tokyo 140-0001

Established in 1989, we have been engaged in the planning, development, manufacturing, and sales of home-use medical equipment, electric potential therapy devices for more than 30 years. Under the management philosophy of “Health from person to person”, we have been striving to realize “a longer healthy life for our customers and a higher level of life satisfaction”.

Home-use electric potential therapy devices are classified as Class II controlled medical devices and are expected to relieve symptoms such as stiff shoulders, headaches, insomnia and chronic constipation through the effects of the electric field generated by applying weak electrical energy to the body on the autonomic nervous system and the endocrine system.



IFG Corporation

<https://ifg.jp>

1-15-10 Oritate, Aoba-ku, Sendai, Japan

IFG Corporation was founded in 2005. Since our establishment, we have been engaged in technological development and manufacturing based on magnetic field technology. Pathleader is a magnetic stimulator. Magnetic stimulation has been studied in the field of rehabilitation for central nervous system disorders.

ココロカ株式会社

<https://cocoroca.co.jp/>

東京都品川区北品川4-7-35 御殿山トラストタワー11階

当社は、1989年に設立し、30年以上に渡って家庭用医療機器である電位治療器の企画・開発・製造・販売業を営んでおり、「健康を、人から人へ。」という経営理念の下、「お客様の健康寿命を長く、人生の満足度を高く」を実現すべく、事業に邁進しております。

家庭用電位治療器は管理医用機器クラスIIに分類され、微弱な電気エネルギーを身体に与えることで発生する電界が、自律神経系や内分泌系に作用し、「肩こり・頭痛・不眠・慢性便秘」といった症状の緩和が見込めるとされております。

株式会社IFG

<https://ifg.jp>

宮城県仙台市青葉区折立1-15-10

IFGは、2005年(平成17年)に設立されました。当社は設立当初から、磁場に関する技術をベースとし、「常識にとらわれない」「既存概念をくつがえす」ことをテーマに技術開発・モノづくりを行っています。磁気刺激装置Pathleaderは磁場を活用した医療機器です。痛みなく体に電気を流すことができます。



Abbott Japan LLC

<https://www.abbott.com/>

3-5-27, Mita, Minato-Ku Tokyo, Japan

Abbott understand that the first step to living your best life is good health. For more than 135 years, we've put science and innovation to work – to create more possibilities for more people through the power of health. We adapt and respond quickly to changes in the world around us to deliver better solutions to help people live their best lives.

Abbott continues to develop nutrition products that help people improve their health.

We provide nutrition products scientifically formulated to meet the specific nutritional needs of patients with special dietary requirements. And we provide continuing education for healthcare providers.

アボットジャパン合同会社

<https://www.abbott.co.jp/>

〒108-6305

東京都港区三田3-5-27 住友不動産三田ツインビル西館

アボットは、最高の人生を送る第一歩は健康であると信じ、135年以上にわたり、160カ国以上で、栄養製品、診断薬・機器、医療機器、そして医薬品の分野で革新的な製品を開発し続けています。さらに良好な栄養状態は、健康な人生を送るための基盤です。そこで栄養剤製品事業部は、人生のあらゆるステージにおいて、科学的根拠に基づく栄養製品を提供し、人々の潜在能力を引き出し、健康的な生活を送ることを支援します。また、医師・医療スタッフ向けの臨床栄養に特化した教育プログラムを提供することにより、人々のより豊かな未来に貢献します。

Hubbit

Hubbit,inc

<https://www.hubbit.io/>

Osaki-Bright-Core 415, 5-5-15, Kitashinagawa, Shinagawa, Tokyo, Japan

Hubbit,inc is a company that develops “Carebee,” an ICT tool that people can use for aged. It's developed after three months of living and working in a senior care facility, Carebee is operation-less. Video calls are realized without any operation, and the UI/UX is personalized so that even slightly complicated service use can be realized with a few taps. Even if a problem happened, simply press the one button on the Carebee and a Carebee supporter provide support remotely, you feel free to say goodbye to the digital divide.

Hubbit株式会社

<https://www.hubbit.io/>

東京都品川区北品川5-5-15 大崎ブライトコア415

Hubbit株式会社は「より良い最期をITで実現する」をミッションに人々が老化しても利用できるICTツール「ケアビー」を開発している会社です。高齢者施設に3ヶ月間住み込みを行って開発したケアビーは操作レスになっています。ビデオ通話は操作不要で実現、少し複雑なサービス利用も数タップで実現できるようなUI/UXをパーソナライズ。仮に困ったことが発生したとしても、ケアビーにある「話しかける」ボタンを押すだけで、全国に待機しているケアビーサポーターに遠隔操作でサポートしてもらえるので安心です。





SS SAICHI Corporation

<https://www.saichi.jp>

34-1Miyanishi, Nakabata-cho, Nishio-city, Aichi-pref. JAPAN 444-0303

We will support a sense of “security”, “safety” and “health” in daily life through IoT and wearables. We will be showcasing the health management wearable device, SS Watch Pro, which can be worn daily like a wristwatch. It automatically records body temperature, blood oxygen levels, blood pressure, and heart rate, allowing for continuous health monitoring anytime, anywhere.

It features 4G connectivity, calling capabilities, no need for a smartphone, GPS, fall detection, and heatstroke risk detection. Additionally, you can manage multiple individuals through a centralized management interface.

Please be sure to visit our booth.



CYBERDYNE Inc

<https://www.cyberdyne.jp>

2-2-1, Gakuen-Minami, Tsukuba, Ibaraki Prefecture, 305-0818, Japan

To solve various issues facing society, the Group will make full use of “Cybernetics” (a new field that integrates and combines human, robot, AI, and information systems) and handle HCPS (Human-Cyber-Physical Space) in a unified manner. Furthermore, through Cybernetics, the Group promotes the realization of “Techno Peer Support” and future development by creating the “Cybernetics Industry,” a new industry that will follow the robotics and IT industries.

株式会社サイチ

<https://www.saichi.jp>

愛知県西尾市中畑町宮西34-1

IoT・ウェアラブルで生活の「安心」・「安全」・「健康」をサポートしていきます。

健康管理ウェアラブルデバイスSS Watch Proを出展します。

腕時計タイプの日常的に装着できるデバイスで、体温・血中酸素濃度・血圧・心拍数を自動で記録でき、いつでもどこでも健康管理を行います。

4G通信・通話機能により、スマートフォン不要・GPS・転倒検知機能・熱中症リスク検知機能があります。さらに、複数人を管理画面で一元管理できます。

CYBERDYNE株式会社

<https://www.cyberdyne.jp>

〒305-0818 茨城県つくば市学園南二丁目2番地1

CYBERDYNE株式会社は、社会が直面する様々な課題を解決するため、「人」+「サイバー」・フィジカル空間(HCPS: Human-Cyber-Physical Space)を融合する「サイバニクス(人・AIロボット・情報系の融合複合)技術」を駆使して、人とテクノロジーが共生し相互に支援し合う「テクノ・ピアサポート社会」の実現、ロボット産業・IT産業につづく新産業「サイバニクス産業」の創出による未来開拓を推進しています。

KISSEI COMTEC

KISSEI COMTEC CO., LTD.

<https://www.kicnet.co.jp/>

4010-10 Wada, Matsumoto, Nagano, 390-1293 Japan

Aiming to be a system integrator that provides high value-added services, Kissei Comtec is committed to maximizing the benefits created by information technology and helping our customers achieve their goals. All of us at Kissei Comtec are committed to providing the best possible service to our customers, using our wealth of know-how cultivated through years of experience while proactively incorporating cutting-edge information technology.

We will continue to provide services that satisfy our customers and contribute to the realization of a truly affluent society.



MORITOH Co., Ltd.

<https://www.moritoh.co.jp/>

3-36 Higashijima-cho, Ichinomiya-city, Aichi, 491-0074 Japan

MORITOH is a specialized manufacturer of Assistive devices focused on mobility, transferring, and walking.

Our patient lifts 'TSURUBE' have variations which are designed for various users and places. We suggest solutions to improve of quality of life and prevent their care level by using patient lifts.

キッセイコムテック株式会社

<https://www.kicnet.co.jp/>

〒390-1293 長野県松本市和田4010番10

キッセイコムテックは、付加価値の高いサービスを提供するシステムインテグレーターを目指して、情報技術が生み出すメリットの最大化、お客様の目的達成のためのサポートをさせて頂いております。最先端の情報技術を積極的に取り入れながら、長年の経験で培った豊富なノウハウを用いて、お客様にとって最適なサービスを提供できるよう、全社員が日々努力を続けています。

これからも、お客様に満足して頂けるサービスを提供し、真に豊かな社会の実現に貢献していけることを目指していきます。

株式会社モリトー

<https://www.moritoh.co.jp/>

愛知県一宮市東島町3-36

モリトーは移動・移乗・歩行に特化した福祉用具の専門メーカーです。

介護リフト「つるべ」は、様々なご利用者、ご使用場所を想定し多くのバリエーションをそろえています。また、最近では介護リフトを活用した自立化支援・重度化防止に取り組んでいます。





TOWA PHARMACEUTICAL CO.,LTD.

<https://www.towayakuhin.co.jp/english>

2-11, Shinbashi-cho, Kadoma, Osaka 571-8580

JAPAN TEL: +81(0)6-6900-9100

FAX: +81(0)6-6908-2138

President Itsuro YOSHIDA

Established June 1951

Incorporated April 1957

Listing Prime section of the Tokyo Stock Exchange (TSE)

(Securities code :4553)

Capital stock 4,717 million yen (as of end of March 2023)

Business operations Manufacture and sale of ethical drugs

Products 776 (as of June 2023)

Employees 3,578 (as of April 1st, 2023)

Subsidiary

company J-DOLPH Pharmaceutical CO., LTD.

(Manufacture and sale of ethical drugs)

Daichi Kasei CO., LTD.

(R&D and production of active pharmaceutical ingredients and intermediates)

Greencaps Pharmaceutical CO., LTD.

(Production of ethical drugs of softcapsules)

T Square Solutions CO., LTD.

(Delivery and relevant business of IT service associated with healthcare)

Towa Pharma International Holdings, S.L.

(EU/US Regional Headquarters)

Protosera Inc.

(Disease risk testing service business and research and development of diagnostic drugs)

Sunsho Pharmaceutical Co., Ltd.

(Planning, development and OEM manufacturing of health foods, pharmaceuticals, general foods and other miscellaneous merchandizes)

東和薬品株式会社

<https://www.towayakuhin.co.jp/>

〒571-8580 大阪府門真市新橋町2番11号

TEL: 06-6900-9100 (代表)

FAX: 06-6908-2138

代表者 吉田逸郎 (代表取締役社長)

創業 1951年6月 (昭和26年)

設立 1957年4月 (昭和32年)

上場取引所 東京証券取引所プライム市場 (証券コード:4553)

資本金 47億1,770万円 (2023年3月末現在)

事業内容 医療用医薬品の製造・販売

自社製品 776品目 (2023年6月現在)

従業員数 3,578名 (2023年4月1日現在)

取引銀行 三菱UFJ銀行

みずほ銀行

日本政策投資銀行

グループ会社 ジェイドルフ製薬株式会社 (医療用医薬品の製造販売)

大地化成株式会社 (医薬品原薬・中間体の研究開発及び製造)

グリーンカプス製薬株式会社 (医薬品のソフトカプセル製造)

Tスクエアソリューションズ株式会社 (ヘルスケア関連のITサービス提供など)

Towa Pharma International Holdings, S.L. (欧米地域統括会社)

株式会社プロトセラ (疾病リスクの検査サービス事業および診断用医薬品の研究開発など)

三生医薬株式会社 (健康食品、医薬品、一般食品、雑貨等の企画・開発・受託製造など)



Inter Reha Co.,Ltd

<https://www.irc-web.co.jp/>

1-37-15 Kaminakazato, Kita-ku, Tokyo, 114-0016, Japan

InterRehab Corporation selects the equipment necessary for rehabilitation from the viewpoint of the field and proposes rehabilitation equipment that is always one step ahead of the competition through our extensive overseas network.

We consider it most important to introduce our products to the Japanese rehabilitation market based on the concept of "superior hardware and software" in order to meet the various needs of our customers.

メディカル・デバイス産業振興協議会

Medical Device Industrial Development Council

<http://medical-device.jp/index.html>

c/o Nagoya Chamber of Commerce & Industry, 2-10-19 Sakae, Naka-ku, Nagoya-shi, Aichi-ken 460-8422 Japan

The "Medical Device Industry Promotion Council" is developing a variety of projects to utilize the manufacturing power of the Nagoya region to promote the medical device industry such as meetings to present needs in the medical field, seminars to learn about the latest trends and matching.

Our main business, "Medical Messe," is an exhibition and business meeting focused on the medical device industry. We are planning to hold it at AichiSkyExpo in April next year (to be held at the same time as the regular academic meeting of the Japanese Society of Surgical Sciences).

インターリハ株式会社

<https://www.irc-web.co.jp/>

〒114-0016 東京都北区上中里1-37-15

インターリハ株式会社は、リハビリテーションに必要な機器を現場の視点からセレクトし海外との幅広いネットワークで、常に一步進んだリハビリテーション機器をご提案致します。

お客様の様々なご要望にお応えする為に「優れたハード&ソフト」のコンセプトで日本のリハビリテーション市場に紹介させて頂くことが最も重要なことと位置づけをしております。

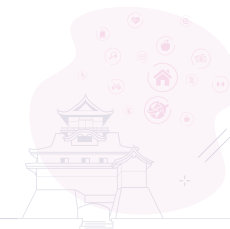
メディカル・デバイス産業振興協議会

<http://medical-device.jp/index.html>

460-8422 名古屋市中区栄2丁目10-19 名古屋商工会議所 産業振興部内

「メディカル・デバイス産業振興協議会」は、名古屋地域を中心としたモノづくりの力を医療機器産業の振興に活かすべく、医療現場におけるニーズ発表会や最新動向を学ぶセミナー、さらには医療機関や医療機器メーカーとのマッチング等、地域の医療機器産業の振興に向けて、各種事業を展開しています。

主要事業である「メディカルメッセ」は、医療機器産業にフォーカスした展示商談会。であり、来年4月に、AichiSkyExpoを会場に開催を予定しています(日本外科学会定期学術集会との同時開催)。





PARAMOUNT BED CO., LTD.

<https://www.paramountbed-hd.co.jp/english>

2-14-5, Higashisuna, Koto-ku, Tokyo 136-8671

Founded: May in 1947

Established: May in 1950

Capital: 6,591 million yen

President and Chief Executive Officer: Tomohiko Kimura

Main business content

1. Manufacture and sale of medical and nursing care beds, etc., and fixtures and fittings.
2. Manufacture and sale of medical welfare equipment and furniture, etc.
3. Import/export, leasing, rental, and maintenance/repair of the above items

We started as a specialized manufacturer of hospital beds, and since then, in response to the aging of the population, we have expanded our business to include elderly care facilities and home care, and developed a variety of products. In recent years, we have expanded into the health business, which focuses on proposing comfortable sleeping environments for healthy people, and we are also actively promoting overseas expansion.

TOPPAN

Toppan Inc.

<https://www.toppan.com/en/>

1-3-3, Suido, Bunkyo-ku, Tokyo 112-8531, Japan

The Toppan Group has grown beyond its traditional printing business and now offers a broad range of products and services with printing technologies at their core in the Information & Communication, Living & Industry, and Electronics segments.

パラマウントベッド株式会社

<https://www.paramount.co.jp/>

〒136-8670 東京都江東区東砂2丁目14番5号

創業:1947年5月 設立:1950年5月 資本金:65億9,132万円

代表者:代表取締役社長 木村友彦

主な事業内容

1. 医療・介護用ベッド等および什器備品の製造、販売
2. 医療福祉機器および家具等の製造、販売
3. 上記品目に関する輸出入、リース、レンタル、および保守・修理

私たちは病院用ベッドの専門メーカーとしてスタートし、その後、高齢化の進展を背景として、高齢者施設や在宅介護分野にも事業領域を拡大しながら、さまざまな製品を開発してまいりました。近年では健康者向けの快適な睡眠環境提案を中心に展開する健康事業に進出したほか、海外展開についても積極的に推進しております。

TOPPAN株式会社

<https://www.toppan.co.jp/>

〒112-8531 東京都文京区水道1-3-3

トッパンは、「印刷テクノロジー」をベースに「情報コミュニケーション事業分野」、「生活・産業事業分野」および「エレクトロニクス事業分野」の3分野にわたる幅広い事業活動を展開しております。



Chubu Electric Power Co., Inc.

<https://www.chuden.co.jp/english/>

1, Higashi-shincho, Higashi-ku, Nagoya, Aichi 461-8680, JAPAN

Chubu Electric Power Co., Inc. aims to contribute to the development of a sustainable society with all stakeholders by striving to “attain our unwavering mission” of providing energy that takes the global environment into consideration, such as decarbonization, in a safer, more affordable and more stable manner, and to “create new value” by contributing to issue resolution and revitalization of regional society.

At the Independent Aging Convention 2023, Chubu Electric Power introduces its frailty detection service that have started provide local governments detects elder person who are physically declines due to aging by analysing electric power consumption data.



Sysnet Inc.

<https://sysnet.co.jp/healthcareproducts/>

9F 2-18, Taiyuji-cho, Kita-ku, Osaka-shi, Osaka, Japan

Sysnet Inc. focuses on the software development business, and its healthcare division mainly plans, develops, and sells products in the rehabilitation field, mainly targeting higher brain dysfunction. STELA, a language function evaluation system that combines digital technology to quickly evaluate aphasia, KOTOREHA, an aphasia training system, Vi-dere, a VR-type Unilateral Special Neglect (USN) rehabilitation system, TraceCoder, an upper limb dexterity evaluation and training system, etc. We are developing and selling. We also sell NPI applications that evaluate BPSD.

中部電力株式会社

<https://www.chuden.co.jp/>

名古屋市中区東新町1番地

中部電力は、脱炭素など地球環境に配慮した良質なエネルギーを安全・安価で安定的にお届けするという「変わらぬ使命の完遂」と、地域課題の解決と活性化への貢献などによる「新たな価値の創出」で、全てのステークホルダーの皆さまとともに持続可能な社会の発展に貢献することを目指しています。

Independent Aging Expo 2023では、2023年4月に自治体向けにサービス提供を開始した、フレイル検知サービス「eフレイルナビ」をご紹介します。

シスネット株式会社

<https://sysnet.co.jp/healthcareproducts/>

大阪市北区太融寺町2-18 9F

シスネット株式会社は、ソフトウェア開発事業を中心とし、ヘルスケア事業部では主にリハビリテーション領域において、主に高次脳機能障害等を対象とした製品を企画・開発・販売しております。デジタル技術を組み合わせ、迅速な失語症の評価が実施できる言語機能評価システムSTELA、失語症の訓練システムKOTOREHA、VR型の半側空間無視リハビリ支援システムVi-dere、上肢の巧緻性の評価・訓練システムTraceCoder等を開発・販売しております。

その他、BPSDの評価を行うNPIアプリケーション等も販売させて頂いております。





TL Genomics Inc.

<https://tlgenomics.com/>

Venture port 306 (Office) Nakacho 2-24-16,
Koganei city Tokyo 1840012, JAPAN

TL Genomics is a biotech company, who owns a who owns a portfolio of unique technologies. We have developed a new B to C test which measures a biological age.

Not like a chronological age, the biological age indicates the true status of your body's aging by counting a bio-marker. The biological age may reflect a cumulative condition of your life, by which you may justify your way of anti-aging.

This test will be very popular in the future, just like measuring the body weight when people try to control (or to reduce) their weight.



Knowledge Hub Aichi, Priority Research Project from Aichi Prefectural Government

<https://www.astf-kha.jp/project/>

1267-1, Akiai, Yakusa-cho, Toyota-shi, Aichi

We research and develop systems and devices which efficiently support early detection, prevention, and recovery of/from frailty (i.e., vulnerable states of mental and physical functions) toward realizing age-free society, in which elderly people feel lively. The purpose of this research and development is to solve the problem of sudden increase in demand of medical treatment and nursing care by reducing periods required for the treatment and care. We also work out the issue of workforce shortage owing to rapid aging and very low birthrate. This research can make contribution to longevity society.



Independent Ageing



株式会社TL Genomics

<https://tlgenomics.com/>

東京都小金井市中町2-24-16 農工大・多摩小金井
ベンチャーポート306

弊社は、技術開発型のバイオベンチャーです。この展示会では、独自の技術で開発した【老化を数値化する生物年齢検査】をご紹介します。

生物年齢とは、カレンダーから求める暦年齢とは異なり、バイオマーカーを検出することで分かる体の年齢です。環境や日々の生活の結果を反映するものであり、エイジングケアの羅針盤になると期待されます。このような老化の定量化は世界中から注目を集めており、ダイエットの際に体重を測るように、エイジングケアには必須の検査となると考えています。

知の拠点あいち重点研究プロジェクト

<https://www.astf-kha.jp/project/>

愛知県豊田市八草町秋合1267-1

知の拠点あいち重点研究プロジェクト第IV期では、プロジェクトSDGsにおける研究テーマの一つとして、「多感覚ICTを用いたフレイル予防・回復支援システムの研究開発」に取り組んでいる。この研究テーマでは、「健康な状態」と「要介護の状態」との中間段階である「心身機能脆弱状態(フレイル)」に着目し、エイジフリー(高齢者が生き生きと活動し、社会貢献可能な)社会の実現を目指して、要介護の期間を短縮するため、フレイルの早期発見・予防・回復を高効率支援するシステム・デバイスを開発している。

InBody

See what you're made of

InBody Japan Inc.

<https://inbodyusa.com/>

Tani Bldg., 1-28-6, Kameido, Koto-ku, Tokyo 136-0071 JAPAN

What is InBody measurement?

InBody measurement is a test that quantitatively analyzes body water, protein, minerals, and body fat, which are the basic components of the body, to evaluate excesses and deficiencies in human body components, such as whether there are any nutritional problems, whether the body is swollen, and whether the body is well developed and balanced, etc. InBody measurement is a simple and accurate way to analyze body components and to help the person being measured understand his/her body condition in an easy-to-understand manner. The InBody test is a simple and accurate way to analyze body composition and to help you understand the state of your body in an easy-to-understand manner. In addition, the muscle mass and body fat percentage by region can be utilized as a consultation material for exercise guidance. We look forward to seeing you at the InBody booth.

DAI-ICHI LIFE

The Dai-ichi Life Insurance Company, Limited

<https://www.dai-ichi-life.co.jp/english/index.html>

13-1, Yurakucho 1-chome, Chiyoda-ku, Tokyo 100-8411, Japan

By your side, for life

Since our foundation in 1902, the Dai-ichi Life has always put the customer first. This philosophy continues to guide us as we move forward. We contribute to local communities by passing on peace of mind through providing life insurance and related services. As part of the Dai-ichi Life Group, all our companies will continue to stand by the side of our customers and their loved ones, for life.

#INAGE2023

株式会社インボディ・ジャパン

<https://www.inbody.co.jp/>

東京都江東区亀戸1-28-6 タニビル

InBody測定とは?

体を構成する基本成分である体水分、タンパク質、ミネラル、体脂肪を定量的に分析し、栄養状態に問題がないか、体がむくんではいないか、身体はバランスよく発達しているかなど、人体成分の過不足を評価する検査です。InBody測定は手軽で正確に体成分を分析して、測定者の体内状態を分かりやすく把握できるよう導きます。また部位別筋肉量・体脂肪率は運動指導の相談材料として活用できます。是非InBodyのブースにお立ち寄りください。

第一生命保険株式会社

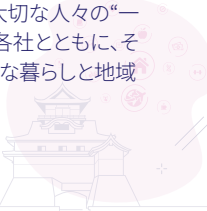
<https://www.dai-ichi-life.co.jp/>

東京都千代田区有楽町1-13-1

「一生涯のパートナー」 お客さま第一主義

第一生命は、1902年、日本での創業以来、お客さま本位(お客さま第一)を経営の基本理念に据え、生命保険の提供を中心に、地域社会への貢献に努めてきました。

これからも、お客さまとお客さまの大切な人々の「一生涯のパートナー」として、グループ各社とともに、それぞれの地域で、人々の安心で豊かな暮らしと地域社会の発展に貢献していきます。





Good Life Design, Inc.

<https://www.goodld.com/>

1-62, Heiwa-cho, Toyota-city, Aichi-Prefecture

1. Support business for local medical institutions, nursing care and welfare facilities, companies, health insurance associations, etc.

- Contracted specimen testing, medical clerical work, in-hospital logistics, health guidance, etc.
- Operation of dispensing pharmacies, joint purchasing of pharmaceuticals, medical supplies, medical equipment, etc.

2. Health, nursing care and lifestyle services business providing various health care-related products and services

- Care plan preparation
- Health management and health data services
- Welfare equipment rental and sales, care prevention, etc.



Sakai Medical Co., Ltd.

<https://www.sakaimed.co.jp/english/>

358-6, Yamabukicho, Shinjuku, Tokyo, 162-0801, Japan

SAKAimed, as a partner for the people who hope for well-being and those who support that hope, will develop comprehensive businesses on MEDICAL CARE, SOCIAL WELFARE and HEALTH CARE centering on REHABILITATION.

We will provide valuable products and services to contribute building a lively and affluent society by responding to the requests of the people who hope for well-being and those who support that hope.

Specifically, we are developing our business in elderly welfare, including bathing equipment, medical rehabilitation, and sports support.

株式会社グッドライフデザイン

<https://www.goodld.com/>

愛知県豊田市平和町1-62

1.地域の医療機関・介護福祉施設・企業・健康保険組合等のサポート事業

- 検体検査、医療事務、院内物流業務、保健指導等の受託
- 調剤薬局運営、医薬品・医療材料・医療機器等の共同購入など

2.各種ヘルスケア関連商品・サービスの提供を行う健康・介護・生活サービス事業

- ケアプラン作成
- 健康管理・健康データサービス
- 福祉用具レンタル、販売・介護予防など

酒井医療株式会社

<https://www.sakaimed.co.jp/>

〒162-0801 東京都新宿区山吹町358-6

健康を願う人・支える人のパートナーSAKAimedは、リハビリテーションを軸に医療・福祉・保健を総合的にとらえたビジネスを展開しています。

私たちは、豊かな暮らしを願う人々と、それを支える人々の要望に応え、価値ある商品とサービスを提供し、活力ある豊かな社会の構築に貢献していきます。

具体的には、入浴装置をはじめとする高齢者福祉、メディカルリハビリテーション、スポーツサポートにて事業展開をしています。



National Center for Geriatrics and Gerontology

<https://www.ncgg.go.jp/english/index.html>

7-430 Morioka-cho, Obu City, Aichi Prefecture, Japan

The National Center for Geriatrics and Gerontology (NCGG), which is composed of the National Hospital for Geriatric Medicine and the Research Institute, is one of the six national centers for advanced and specialized medicine in Japan.

Our mission is to dedicate ourselves to promotion of the physical and mental health of the elderly, so that they can achieve a life-long independence, and the improvement of the health and welfare for the people and the society.

With the close cooperation and interaction between the hospital and the research institute, NCGG as a whole keeps on making efforts toward the realization of healthy and longevity society.



Nagoya Railroad Co., Ltd.

<https://www.meitetsu.co.jp/eng/>

1-2-4, Meieki, Nakamura-ku, Nagoya

Nagoya Railway (Meitetsu) operates a 444.2km network in both Aichi and Gifu prefectures, mainly on the Nagoya Main Line between Toyohashi Station and Meitetsu Gifu Station, and mainly connects Nagoya with major cities in Aichi Prefecture and Gifu City. We have developed a railway network that extends to approximately 1 million people per day, and play a role in the transportation network of the Chubu region.

It has also served as the only rail access to Chubu Centrair International Airport since it opened in 2005.

国立研究開発法人国立長寿医療研究センター

<https://www.ncgg.go.jp/>

愛知県大府市森岡町7-430

国立長寿医療研究センターは、研究所と病院が一体となり認知症、骨・運動器疾患、排尿障害といった高齢者に特有な疾患の克服とともにフレイル・サルコペニアなどの老化関連病態の病態解明・予防・治療を目指した研究開発を行い、その成果をもとに高度先駆的医療を提供するとともに、全国への普及を図ることを使命として運営に取り組んでいます。特に認知症・老化について、基礎・臨床・疫学、工学による学際的研究開発を行っている世界でも有数の研究機関です。

名古屋鉄道株式会社

<https://top.meitetsu.co.jp/>

名古屋市中村区名駅1-2-4

名古屋鉄道(名鉄)は、豊橋駅~名鉄岐阜駅の名古屋本線を中心に、名古屋と愛知県下の主要都市および岐阜市を結ぶ輸送をメインに、愛知・岐阜両県下に444.2kmにおよぶ鉄軌道路線網を展開し、1日あたり約100万人のお客さまにご利用いただいております。中部圏の交通ネットワークの一翼を担っています。

また、2005年の中部国際空港開港以降、同空港への唯一の鉄道アクセスも担っています。



TANITA

TANITA Co. Ltd.

<https://www.tanita.com/en/>

1-14-2, Maeno-cho, Itabashi-ku, Tokyo, 174-8630, Japan

Tanita began manufacturing household scales in 1959. Since then, we have continued research and development and commercialized the world's first body fat scale that measures body fat percentage just by getting on the scale, as well as body composition analyzers and activity meters with more measurement items to serve as health standards. In addition, we have always provided advanced health measurement devices and health services, such as the Tanita Health Program, a group health promotion package that combines IoT devices and human services.



Kowa Company, Ltd.

Kowa Company, Ltd.

<https://www.kowa.co.jp/eng/index.html>

6-29, Nishiki 3-chome, Naka-ku, Nagoya, Aichi, Japan
{Trading}

Import / Export, Intermediate Trade, and Domestic Sales of Textile, Machinery, Construction Materials, Chemicals, and Commodities

{Manufacturing}

R&D and manufacture of OTC, prescription drugs, and medical devices;

manufacture / sales of FA and security vision units, robot system integrator business, hardware R&D of lenses and cameras, software R&D of system, embedded systems and AI, sales of energy saving and energy creating solutions, construction and sales of environmentally friendly architecture.

株式会社タニタ

<https://www.tanita.co.jp/>

東京都板橋区前野町1-14-2

タニタは1995年に家庭用体重計の製造をスタートしました。以来、研究・開発を続け、世界初の乗るだけで体脂肪率がはかれる体脂肪計をはじめ、健康基準となる計測項目を増やした体組成計や活動量計を商品化。このほか、IoT機器とヒューマンサービスを組み合わせた「タニタ健康づくりパッケージ」「タニタ健康プログラム」など、常に先進の健康計測機器・健康サービスを提供しています。

興和株式会社

<https://www.kowa.co.jp/index.html>

愛知県名古屋市中区錦三丁目6番29号

【商社部門】

繊維、機械、建材、船舶、鉱物資源、化成品原料、生活関連物資などの輸出入、三国間貿易および国内販売

【メーカー部門】

OTC・医療用医薬品・医療用機器の研究開発・製造販売、

FAビジョンユニット・セキュリティビジョンユニットの製造販売、ロボットシステムインテグレーター業務、レンズ・カメラ等のハードウェアの研究開発、システム系・組み込み系およびAI等のソフトウェア研究開発、省エネ・創エネソリューションの販売、省人化ソリューションの販売、環境配慮型建築の施工販売

HT | HEALTHCARE TECHNOLOGIES

HEALTHCARE TECHNOLOGIES Corp.

<https://healthcare-tech.co.jp/>

2-28-8 Shiba, Minato-ku, Tokyo

HEALTHCARE TECHNOLOGIES Corp. is committed to a new approach to realize a society where everyone can have hope for the future, as a member of the team protecting the health and safety of this country.

How should we solve the problems of increasing medical costs, fatigue of healthcare professionals, and changes in the environment surrounding families?

As one answer to this, we will provide smarter, more open healthcare services that utilize technologies such as ICT and AI.



Buzzreach Inc.

<https://www.buzzreach.co.jp/en/>

Kowa Shirokanedai Building 8F.

3-19-1 Shirokanedai, Minato-ku. Tokyo 108-0071

Services

- Clinical trial "subject matching" platform for patient recruitment SearchMyTrial (SMT)
- Localized patient recruitment webpage development for specific clinical studies PostMyBuzz(Puzz)
- Business process outsourcing (BPO) for global companies Entering the Japanese / Korean clinical trial market

ヘルスケアテクノロジーズ株式会社

<https://healthcare-tech.co.jp/>

東京都港区芝 2-28-8

ヘルスケアテクノロジーズは、この国の健康と安心を守るチームの一員として誰もが未来に希望を持てる社会の実現に向けた新しいアプローチを追求しています。

医療費の増大や医療従事者の疲弊、家族を取り巻く環境の変化といった課題を、どのように解決していくべきか。

そのひとつの答えとして、私たちはICTやAIといった技術を活用した、よりスマートで、よりオープンなヘルスケアサービスを提供していきます。

株式会社Buzzreach

<https://www.buzzreach.co.jp/about>

〒108-0071

東京都港区白金台3丁目19-1 興和白金台ビル

- 治験を含む臨床試験・臨床研究に関わる業務効率化プラットフォームシステム(SaaS)の開発及び販売
- インターネットを利用した患者向け臨床試験情報・医療情報マッチングサービス
- 臨床試験被験者の募集に関する支援業務
- 臨床試験・ヘルスケア関連のスマートフォン及びパーソナルコンピューター向けアプリケーションソフトウェアの開発および販売
- インターネットを利用した患者向け医療・ヘルスケア特化型SNSサービス
- 患者PHR事業
- 臨床試験・製薬・ヘルスケア分野のグローバル企業向けBPO(ビジネスプロセスアウトソーシング)業務





-Human Care Company-

YAGAMI CO., LTD.

<https://www.yagami.co.jp>

2-16-30, Chiyoda, Naka-ku, Nagoya-shi, Aichi, 460-8318, Japan

Yagami Seisakusho was founded in 1871 as a trading company specializing in medical equipment.

With the basic principles of “mutual benefit and symbiosis” and “health and welfare”, we have developed various businesses not only in the medical field but also in the nursing care and healthcare fields over our long history of over 150 years.

Mainly in the Tokai and Tokyo metropolitan areas, we are engaged in the sales, maintenance, and rental of medical equipment, sales and rental of nursing care and welfare equipment, home renovation, and sales of health-related products and services.

Toward the age of 100 years of life, we aim to become a “Human Care Company” that comprehensively supports “people” through preventive, medical, and nursing care services, connecting with local communities for the health of all people.



Sugi Pharmacy Co., Ltd.

<https://www.drug-sugi.co.jp/>

62-1Shine, Yokone-cho, Obu-shi, Aichi, Japan

We are a drugstore with dispensing facilities, operating approximately 1,600 stores in the Kanto, Chubu, and Kansai regions. We handle prescription dispensing, counseling and sales of over-the-counter medicines and cosmetics, health counseling, and even home medical care.

株式会社八神製作所

<https://www.yagami.co.jp>

〒460-8318 愛知県名古屋市中区千代田二丁目16番30号

八神製作所は、1871年(明治4年)に創業した医療機器専門商社です。

「共利共生」「生衛・保健」を基本理念とし、150年を超える長い歴史において、医療だけでなく、介護、保健の分野においても様々な事業を展開してきました。

主に、東海圏、首都圏において、医療機器の販売、メンテナンス及びレンタル、介護用品・福祉用具の販売及びレンタル、住宅改修、健康関連製品、サービスの販売等を行っています。

人生100年時代に向けて、すべての人の健康のために、地域社会とつながり、予防・医療・介護のサービスを通じて、総合的に「人」を支える企業＝「Human Care Company」になることを目指しています。

株式会社スギ薬局

<https://www.drug-sugi.co.jp/>

愛知県大府市横根町新江62番地の1

関東・中部・関西で約1600店舗を展開する調剤併設型ドラッグストアです。処方せん調剤や一般薬・化粧品のカウンセリング販売、健康相談から、さらには在宅医療も担っています。地域のお客様、患者様それぞれのライフステージに適した質の高いトータルヘルスケアサービスを提供しています。「健康の維持」「未病」「予防」の領域を深耕し、地域の皆様が、心身共に健康で快適な社会生活が送れるよう、薬剤師のみでなく、管理栄養士による「食生活の改善」「適度な運動」のアドバイスなど、積極的な健康の維持・増進をサポートさせて頂くことで、お客様の”ウェルネス”実現を追求してまいります。



PARO Robots

<http://parorobots.com/>

150 E Pierce Road, Suite 550 Itasca, IL 60143, USA
PARO Robots are the sole distributor of PARO in the US and America.

PARO is a biofeedback medical device in Class 2 by the FDA. When patients with dementia, cancer, PTSD, brain injury, Parkinson's disease, etc. are diagnosed as depression, anxiety, pain, agitation (violent behaviors, abuse words, walking about, etc.), insomnia, etc., “Biofeedback Therapy with PARO” can be prescribed with some CPT codes. Then, the costs of treatments of “Biofeedback Therapy with PARO” can be reimbursed by the “Medicare and Medicaid” and private medical insurance companies.



SUZUKEN CO., LTD.

<https://www.suzuken.co.jp/en/>

8 Higashi Kataha-machi, Higashi-ku, Nagoya, Aichi 461-8701

The Suzuken group, with Health Creation as our business domain, has expanded into a variety of businesses beyond our core business of wholesale of ethical drugs. We have promoted a wide range of businesses in the medical field ranging from research, development and production of new pharmaceuticals, development and manufacture medical equipment, support of pharmaceutical manufacturers, pharmacies and nursing care, to evolve into the only corporate group of its kind.

産業技術総合研究所&株式会社知能システム

<http://intelligent-system.jp/>

茨城県つくば市&富山県南砺市

産業技術総合研究所が研究開発するアザラシ型ロボット・パロの知財のライセンスを受け、知能システムがパロを製造販売する。日本ではパロはペット代替と福祉用具である。米国、EU、英国、新加坡、香港では、パロは医療機器である。米国FDAは、パロを「バイオフィードバック医療機器(クラス2)」とした。認知症、ガン、PTSD、脳損傷、パーキンソン病等の患者が、不安、抑うつ、痛み、興奮(暴力、暴言、徘徊等)、不眠等を診断され、「パロを用いるバイオフィードバック治療」が処方・処置されると、その費用を公的(メディケア、メディケイド)・民間医療保険が保険償還する。

株式会社スズケン

<https://www.suzuken.co.jp/>

〒461-8701 愛知県名古屋市中区東片端町8番地

スズケングループは、「健康創造」を事業領域と定め、医療用医薬品の卸売事業を中核として、医薬品の研究・開発・製造、医療機器の開発・製造、メーカー支援、保険薬局、そして介護に至るまで、医療と健康に関わる事業を総合的に展開しています。





Lux Research Inc

<https://www.luxresearchinc.com/>

100 Franklin Street, Boston, MA 02110 Boston
229308 USA

Lux Research is a leading provider of tech-enabled research and advisory solutions, helping clients drive growth through technology innovation. Our mission is to advise leaders about commercially viable science and technology to enable sustainable innovation. We deliver research and advisory services to inspire, illuminate, and ignite innovative thinking that reshapes and grows businesses. Using quality data derived from primary research, fact-based analysis, and opinions that challenge traditional thinking, our experts focus on finding truly disruptive innovations that are also realistic and make good business sense. Our clients rely on Lux insights to make decisions that generate fantastic business outcomes.

sens research foundation
reimagine aging

SENS Research Foundation

<https://www.sens.org/>

110 Pioneer Way, Ste. J Mountain View 94041 USA

SRF is a 501(c)3 nonprofit research organization that promotes and works actively toward curing age-related disease through research, education, and outreach. We fund and conduct research programs in institutions worldwide and in the SRF Research Center, translating basic research into therapies. Educational interns join world-renowned laboratories for a 3-month internship or a 10-month fellowship to tackle aging at the basic research level. Companies are spun out and funded to get those therapies into the clinic.



Independent Ageing



The College of Contemporary Health (CCH)

<https://contemporaryhealth.co.uk>

90 London Road, Technopark London SE1 6LN
United Kingdom

Founded in 2013, the College of Contemporary Health (CCH) is a leading innovator in dementia education, as well as obesity care, digital health and more, championing online professional development for health experts worldwide. With a blend of flexible learning and world-class academic prowess, CCH offers an engaging gateway to the future of healthcare. Join over 2,000 thriving alumni, including doctors, nurses, and public health leaders who have leveraged our top-rated, university-validated courses. Whether looking to elevate your career, explore new job opportunities, or become a part of a transformative educational experience, CCH is your launchpad to success! Our professional short courses are also accredited by the UK's CPD Certification Service.



UKRI Healthy Ageing Challenge

<https://www.ukri.org/healthy-ageing/>

UK Research and Innovation, Polaris House,
Swindon SN2 1FL United Kingdom

The Healthy Ageing Challenge from UK Research and Innovation (UKRI) aims to enable people to remain active, productive, independent and socially connected across generations for as long as possible. The Challenge has harnessed the very best of the UK's creative talent, along with a strong focus on co-design, to help businesses, including social enterprises, develop innovations with potential to be adopted at scale.

#INAGE2023



University of Southern California Leonard Davis
School of Gerontology

<https://gero.usc.edu>

3715 McClintock Ave Los Angeles 90089 USA

Founded in 1975, the USC Leonard Davis School of Gerontology is the oldest and largest school of its type in the world. We offer the most comprehensive selection of gerontology degree programs found anywhere, a variety of outstanding research opportunities, and a challenging yet supportive academic environment. As a small school rooted in a world-class research university located in the heart of one of the most important cities on earth, the USC School of Gerontology is home to today's leaders in the field, and to tomorrow's. Our program studies the human lifespan by exploring the biological, psychological, sociological, political, medical, and business dimensions of adult life.



Nihon Binary Co., Ltd.

www.nihonbinary.co.jp

JRE Shiba 2-chome Daimon Bldg.,
2-3-3 Shiba, Minato-ku, Tokyo 105-0014

With over 20 years of experience in sales and support of equipment and systems related to robotics and force feedback technology, Nihon Binary provides innovative solutions such as simulation and training for various applications of virtual tactile sensation, and robot teleoperation with force feedback.

Force and tactile feedback technology, which enables users to actually feel the hardness, weight, and surface texture of an object as force-tactile sensation by touching a virtual object on a PC or remotely operating a robot, is expected to make a significant contribution to the elderly market and related industries.

日本バイナリー株式会社

www.nihonbinary.co.jp

105-0014 東京都港区芝2-3-3 JRE芝二丁目大門ビル

日本バイナリー株式会社は、ロボットと触覚応答技術に関連する機器とシステムの販売とサポートに20年以上に及ぶ経験と実績を持ち、バーチャル触感を応用した各種シミュレーションやトレーニング、力を感じながらのロボット遠隔操作といった革新的なソリューションを提供しています。

パソコン上の仮想の物体に触れたり、遠隔地にあるロボットを操作して対象物の硬さや重量、表面の質感を実際に力触感として感じることができる力触覚応答技術は、これからの高齢者市場と関連産業に大きく寄与することが期待されています。

GETTING AROUND IN NAGOYA & TOKONAME

Nagoya, a vibrant city in central Japan, and Tokoname, a charming pottery town nearby, offer a unique blend of modernity and tradition. Getting around these two fascinating destinations can be an enriching experience, and below you can find some tips and insights to make the most of your visit to Nagoya and Tokoname.

Getting Around Nagoya

- **Subway:** Nagoya has an extensive subway network that covers most of the city's major attractions. The two main subway lines are the Higashiyama Line (yellow) and the Meijo Line (purple). Purchasing a day pass or an IC card will make your subway travels hassle-free.
- **Taxis:** Taxis in Nagoya are safe and reliable, but they can be relatively expensive compared to public transportation.

Nagoya's Highlights

- **The Toyota Commemorative Museum of Industry and Technology** in Nagoya celebrates Toyota's transformation from a textile machinery manufacturer to a leading automaker. Housed in a historic red-brick factory, it features sections on textile machinery, classic and modern cars, and interactive exhibits, highlighting Japan's technological advancements. This museum offers a rich and immersive experience for visitors, making it a must-visit destination for those interested in history, industry, and innovation.
- **Nagoya Castle:** Immerse yourself in Japanese history by visiting Nagoya Castle, a magnificent samurai-era fortress. Explore the beautiful gardens and learn about the castle's rich heritage.
- **Atsuta Shrine:** The Shinto shrine is one of Japan's most sacred and houses the legendary Kusanagi-no-Tsurugi sword. Stroll through the serene grounds and experience the tranquility of Japanese spirituality.
- **Osu Shopping District:** Discover a blend of traditional and modern Japan in the bustling Osu Shopping District. Here, you can shop for souvenirs, savor street food, and explore the vibrant atmosphere.



Reaching Tokoname from Nagoya:

- Tokoname is conveniently accessible from Nagoya via the Meitetsu Line. The journey takes approximately 30 minutes. Simply board a train bound for Tokoname at Nagoya Station, and you'll be there in no time.

Tokoname's Highlights:

- **Ceramic Street:** Tokoname's Ceramic Street is a treasure trove of pottery and ceramics. Wander along this charming street, visit shops, and purchase beautifully crafted pottery as souvenirs.
- **Tokoname Pottery Path:** This picturesque walking trail is adorned with ceramic art installations and studios. It's an ideal place to soak in Tokoname's rich pottery culture and appreciate the creativity of local artists.
- **INAX Live Museum:** INAX is a well-known ceramics manufacturer, and their Live Museum provides insight into the world of ceramics. Explore exhibitions, workshops, and a showroom filled with stunning ceramic pieces.
- **Tokoname Manekineko Street:** Don't miss the Manekineko (beckoning cat) statues scattered around Tokoname. These adorable statues are believed to bring good luck and prosperity.

A Comprehensive Approach

Independent Ageing

Innovative Solutions & Technologies for the Ageing Population



Convention
October 13-15, 2023
Aichi, Japan



Independent Ageing

